

Caso Clínico 3

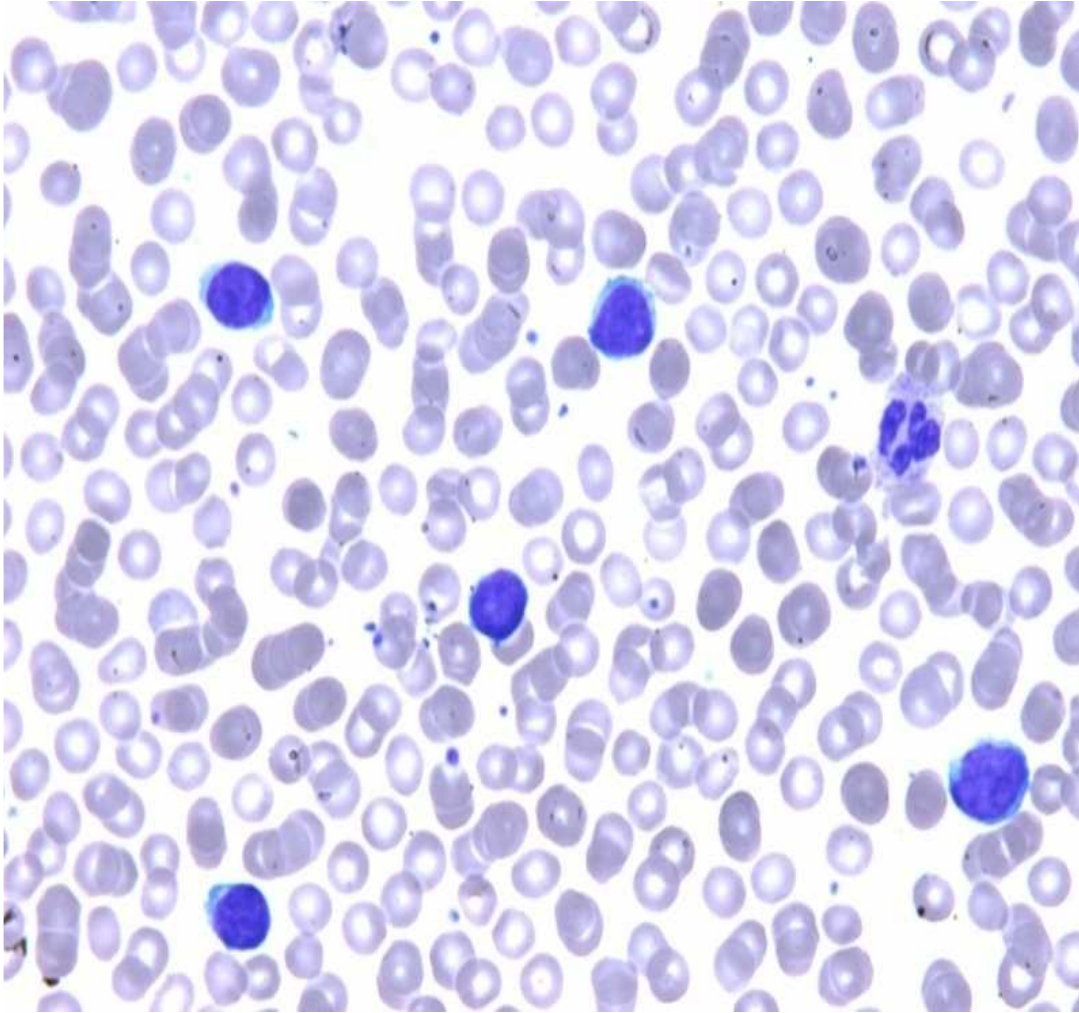
**Universidade Federal do Paraná
Hospital de Clínicas / Laboratório de Imunofenotipagem**

Dra. Mariester Malvezzi
Dra. Ana Paula de Azambuja
Miriam P. Beltrame
Noely T. da Silva
Rosana I. I. Cattaneo

Caso clínico 3

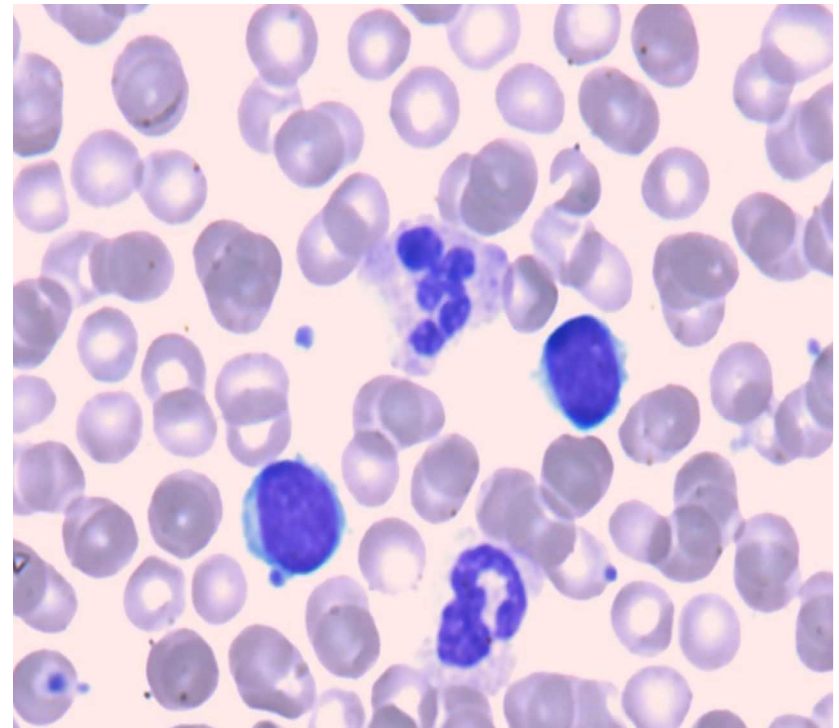
- O.F.S., 77 anos, masculino
- Paciente com queixa de cefaléia e confusão mental.
- Ao exame:
 - BEG, corado, eupnéico.
 - Ausculta pulmonar e cardíaca normais.
 - Abdome sem alterações.
 - Pele sem lesões.

Caso clínico 3

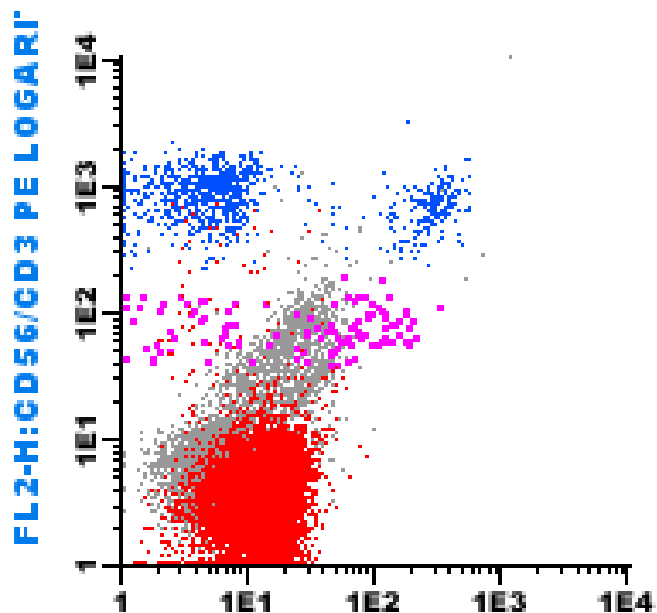


- **Hemograma**

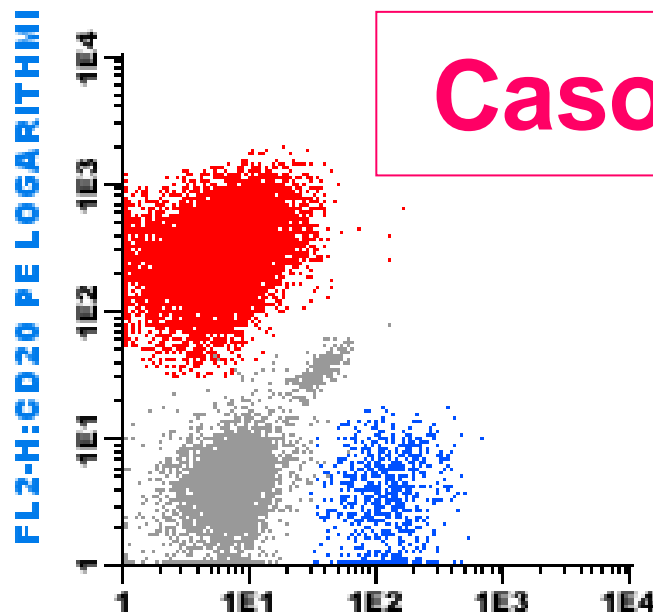
- SV: Hb13,1 g/dl
- SB: 26.170 leucócitos
. 68% linfócitos
- Plaquetas: 201.000 /ul



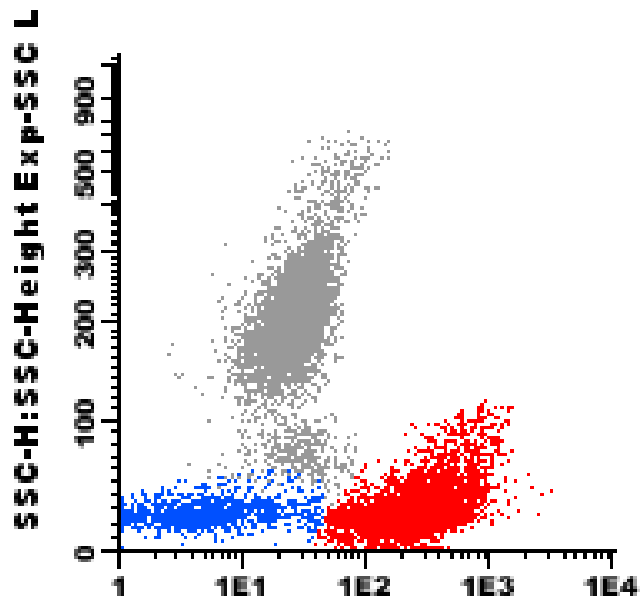
Caso clínico 3



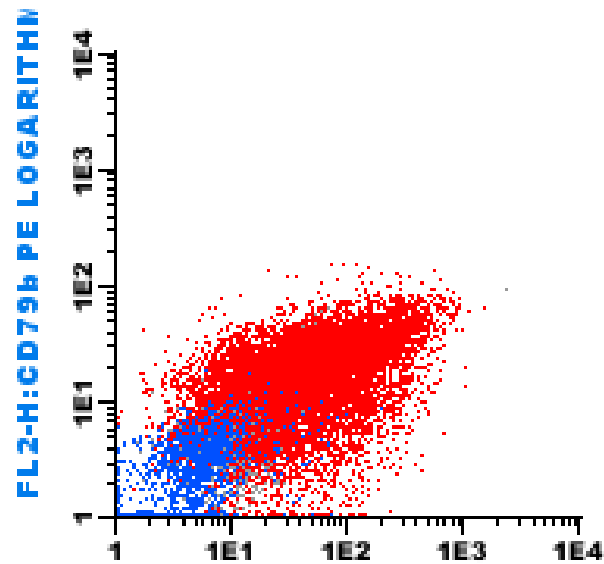
FL1-H:CD8/CD19 FITC LOGARITHM



FL1-H:CD5 FITC LOGARITHM

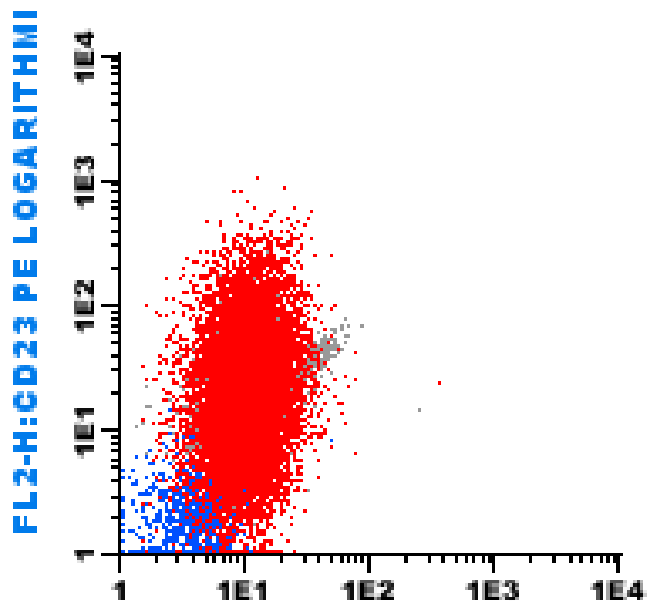


FL3-H:CD 19 PCY5 LOGARITHM

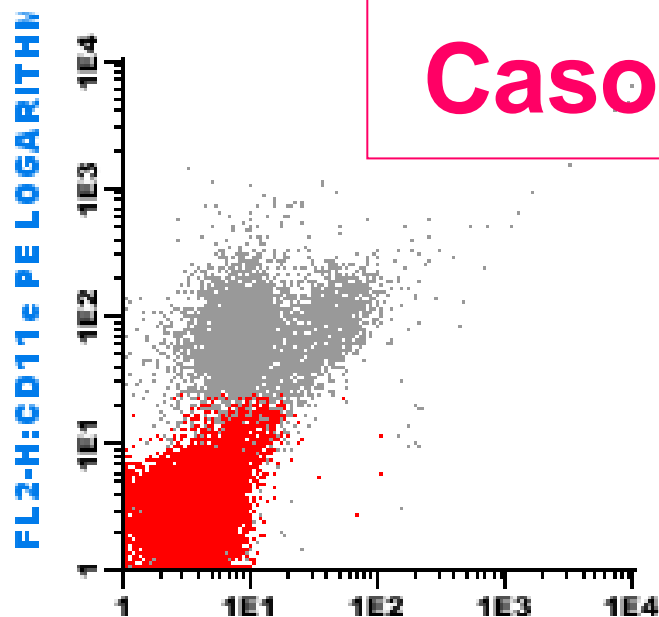


FL1-H:FMC7 FITC LOGARITHM

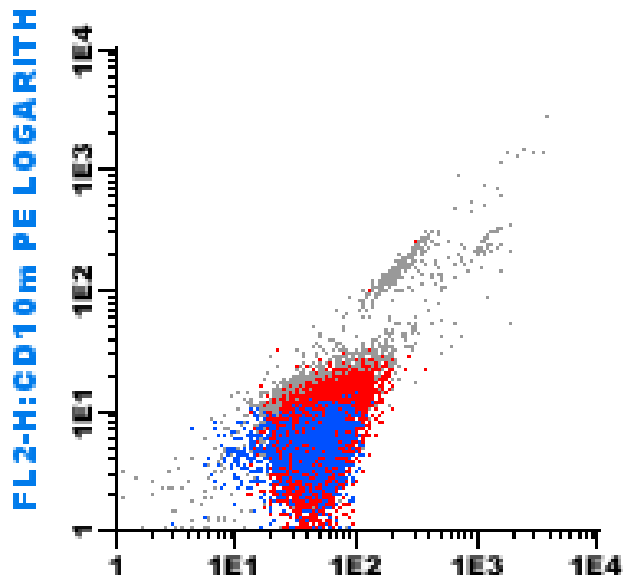
Caso clínico 3



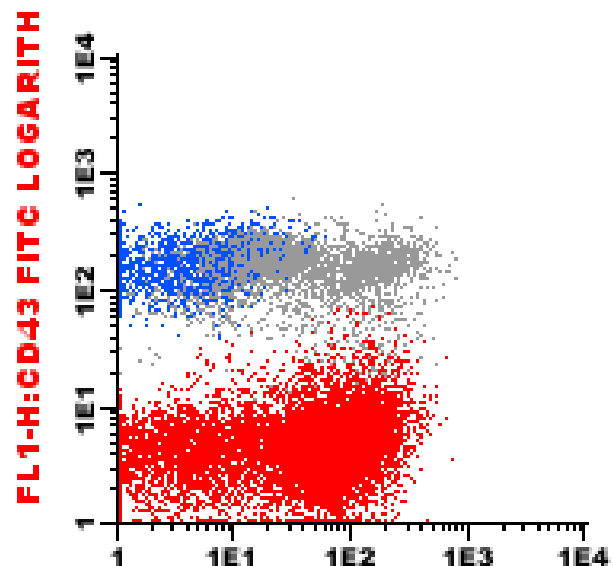
FL1-H:CD22 FITC LOGARITHM



FL1-H:CD103 FITC LOGARITHM

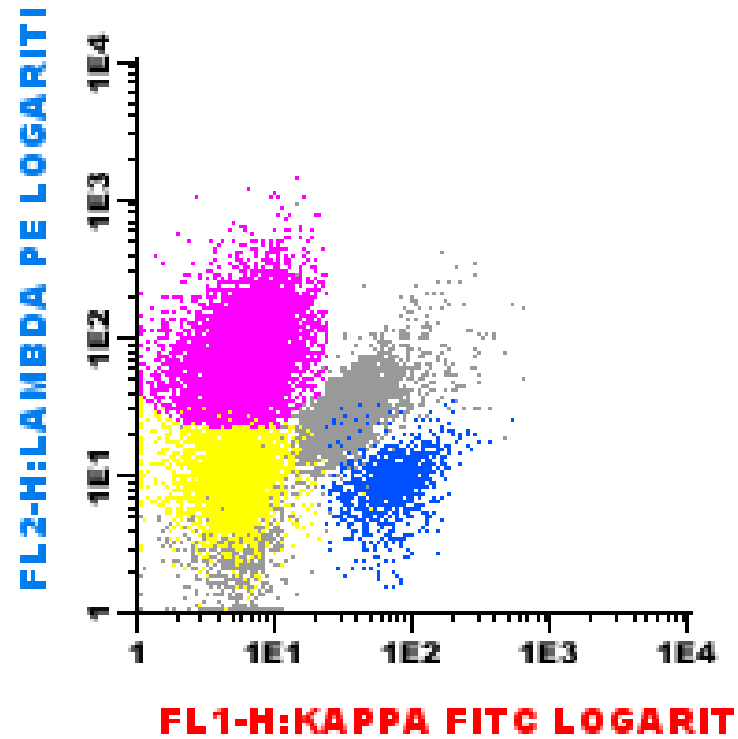
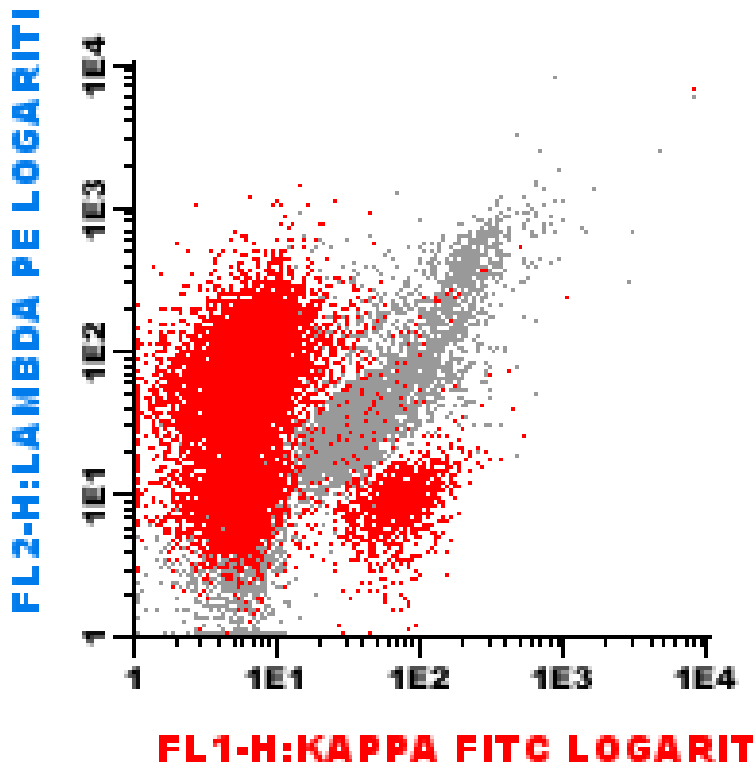
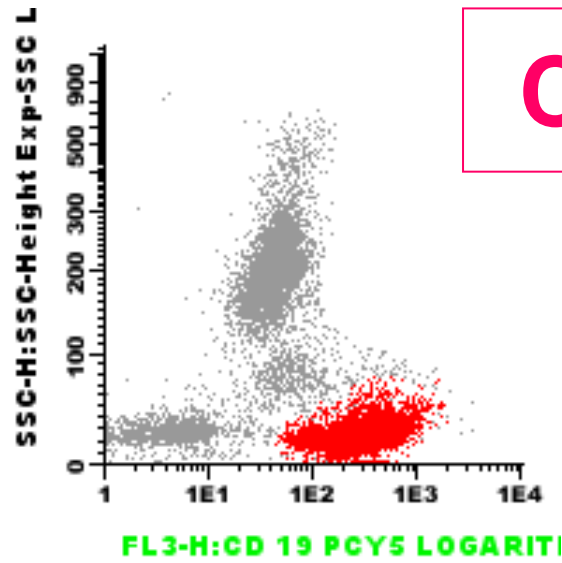
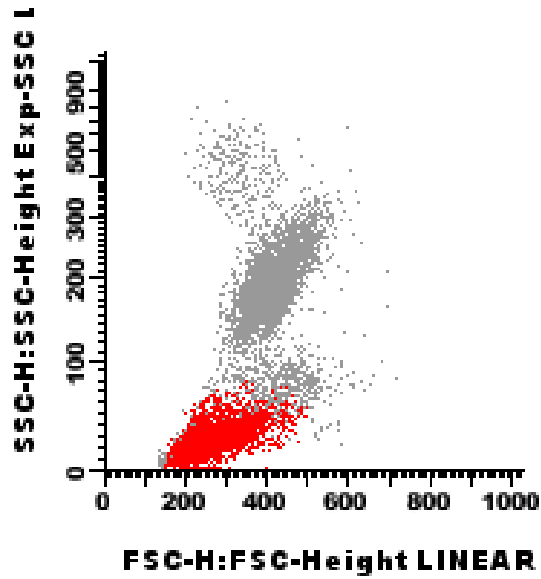


FL1-H:BeI2cy FITC LOGARITHM



FL2-H:IgM PE LOGARITHMIC

Caso clínico 3



Caso clínico 3

- Síndrome Linfoproliferativo Crônico B, com três clones.
- Tema para discussão
 - Como classificar estes casos?
 - Cadeias Kappa e Lambda negativas – é sempre anormal? Não há LB precursores no caso.

